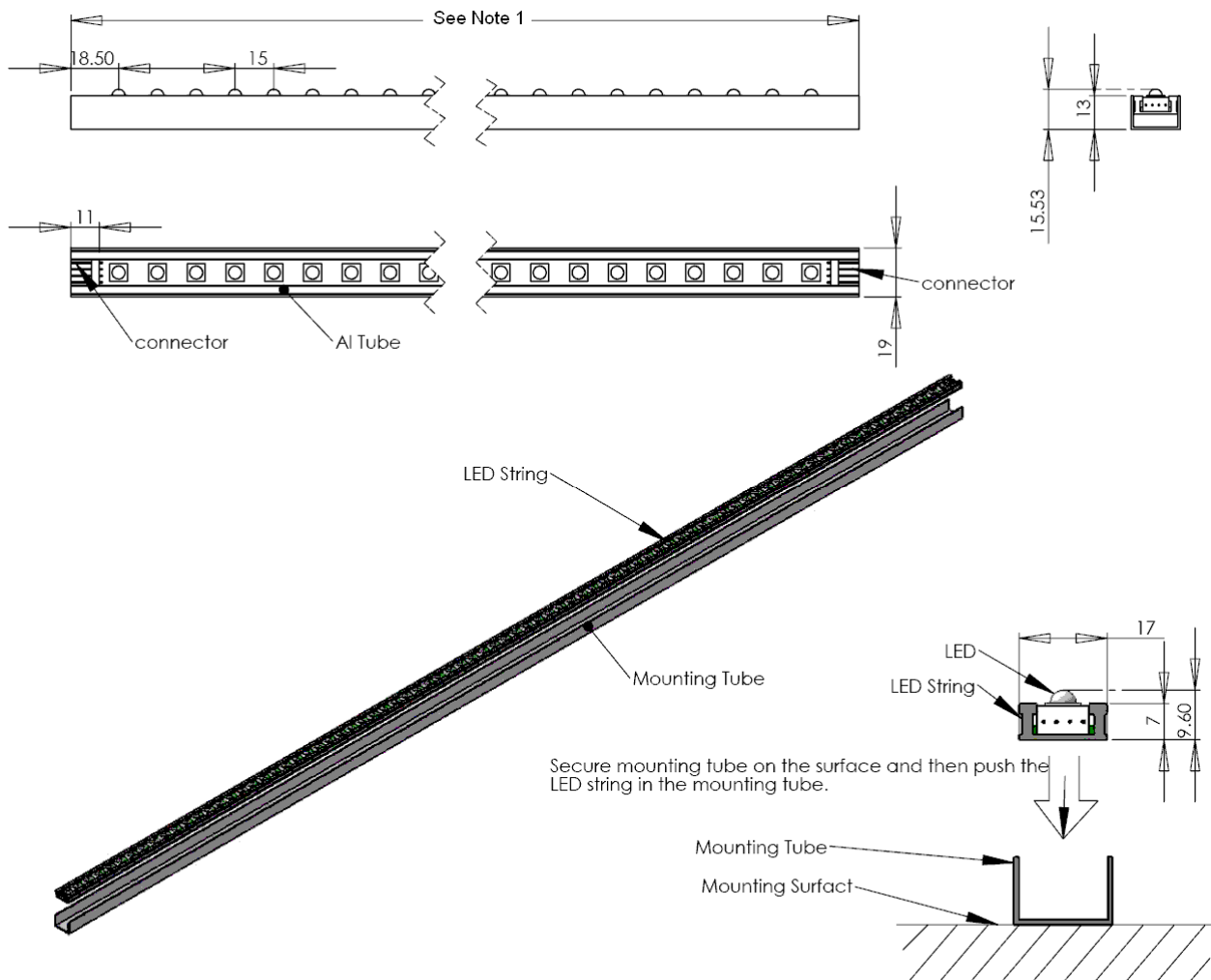


Model No : ALSXXXXAC-DW-15

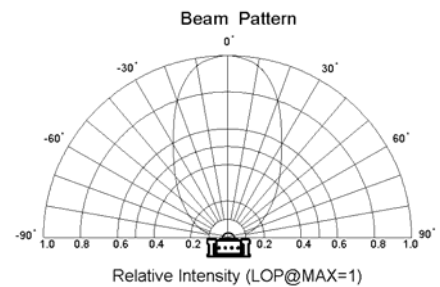
Description : Ultra Warm White Color LED Light String 15mm Pitch

LED String Unit

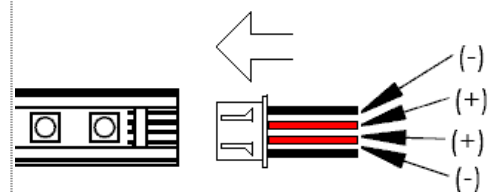


Features :

- Low Voltage Operation (Safe to touch)
- Compact and small size (Smaller than T-5).
- Can direct replace Fluorescent Tube.
- Can connect other string to extend to very long string
- ESD Protection
- Easy mounting,
- Can make water proof
- Low installation cost.
- Each LED Constant current control.
- Special Thermo design makes it low working temperature.
- Dimmable



Connector polarity



Wire Connector Diagram

SPECIFICATION

LED String Unit

Specification:

- Operation Voltage 11.5V-14V
- Color 2800-3500K
- Viewing Angle: 70 Deg.
- Life span 20,000 hour.
- IP rate : IP20
- Housing and mounting material : Aluminum
- Operation Temperature : -30°C – 40°C
- Storage Temperature : -40°C – 60°C

Model No	Total Length	LED Qty	Power Consume	Total Lumens	Weight	Dimension
ALS300A-DW-15	322mm	20	4.8W	200ml	100G	12 X 19 X 322mm
ALS600A-DW-15	622mm	40	9.6W	400ml	200G	12 X 19 X 622mm
ALS900A-DW-15	922mm	60	14.4W	600ml	300G	12 X 19 X 922mm
ALS1200A-DW-15	1222mm	80	19.2W	800ml	400G	12 X 19 X 1222mm
ALS1500A-DW-15	1522mm	100	24W	1000ml	500G	12 X 19 X 1522mm
ALS1800A-DW-15	1822mm	120	28.8W	1200ml	600G	12 X 19 X 1822mm

TRANSFORMER

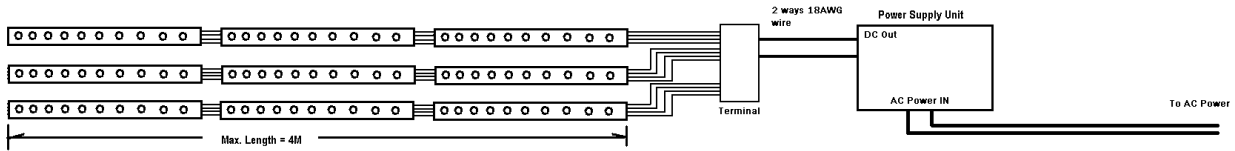
Specification :

- Input Voltage : 110-240V AC 50/60 HZ
- Input Current : 1.3A
- Output Voltage : 12V
- Output Current : 10A (Max.)
- Max, Connect string ALS1200A-XX-30 X 4 pcs.
- Power consumption: 120W
- Connection : Terminal
- IP rate : IP20
- Housing : Metal
- Operation Temperature : -30°C – 50°C
- Storage Temperature : -40°C – 60°C
- Weight : 500G
- Dimension : 40 X 100 X 200mm

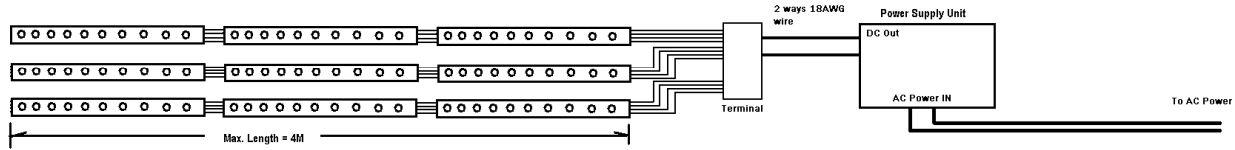


Connection Diagram

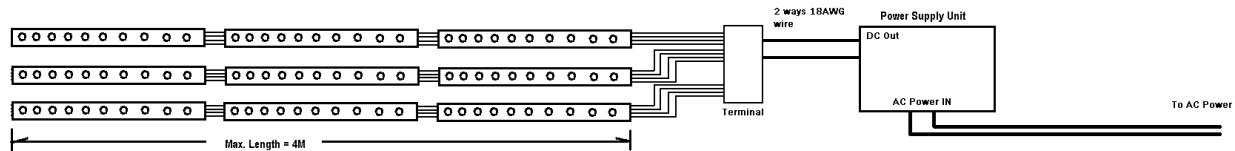
LED String Connect Max. =
 ALS300A-XX-30 * 24 sets / ALS600A-XX-30 * 12 sets / ALS900A-XX-30 * 8 set / ALS1200A-XX-30 * 6 sets / ALS1500A-XX-30 * 5 sets



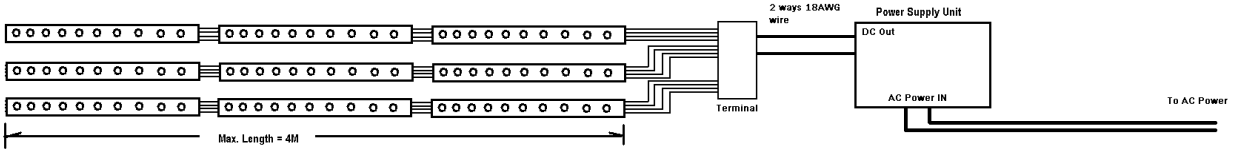
LED String Connect Max. =
 ALS300A-XX-30 * 24 sets / ALS600A-XX-30 * 12 sets / ALS900A-XX-30 * 8 set / ALS1200A-XX-30 * 6 sets / ALS1500A-XX-30 * 5 sets



LED String Connect Max. =
 ALS300A-XX-30 * 24 sets / ALS600A-XX-30 * 12 sets / ALS900A-XX-30 * 8 set / ALS1200A-XX-30 * 6 sets / ALS1500A-XX-30 * 5 sets



LED String Connect Max. =
 ALS300A-XX-30 * 24 sets / ALS600A-XX-30 * 12 sets / ALS900A-XX-30 * 8 set / ALS1200A-XX-30 * 6 sets / ALS1500A-XX-30 * 5 sets



沙田新城市停車場

